

The logo features a green speech bubble with the word "voice" in white, and a blue speech bubble behind it.

babble

The Business Phone System



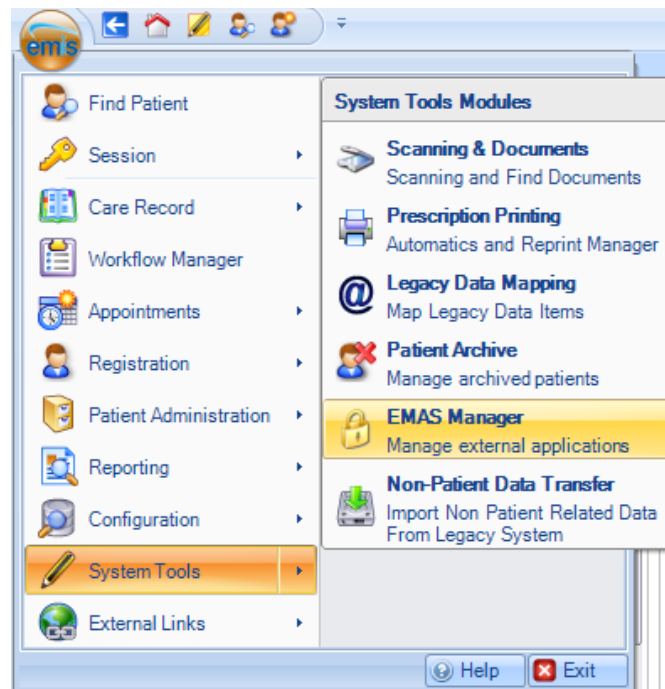
Installation guide

Activating The babblevoice Product In EMIS	3
Access The EMAS Manager	3
Activating The babblevoice Product In EMAS Manager	4
Allowing User Access To The Product	4
Edit Users	5
babblevoice Desktop	6
emis	6
babblevoice Desktop Installer	6
Authorise the babblevoice Desktop	7
Configure babblevoice Desktop	8
Adding the emis plugin	8
babblevoice emis IVR	9
emis User Account	9
Enable the IVR	9
IVR Credentials	10
Agent URL	10
Appointment Range	11
Slot Types	12
Permissions	13
Edit User	13

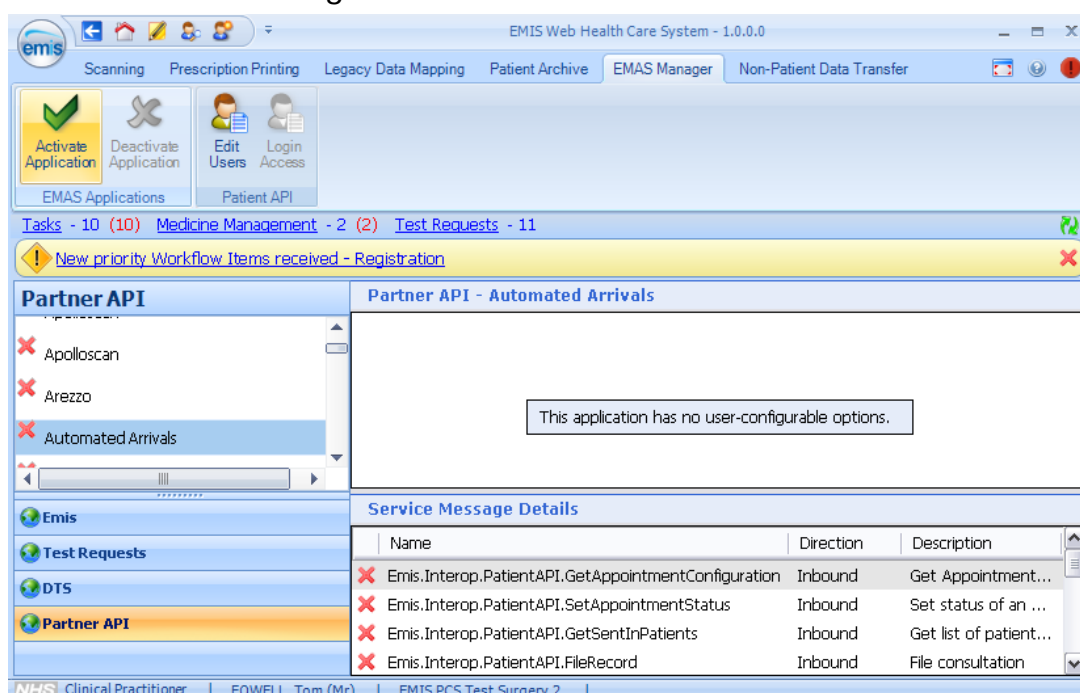
Activating The babblevoice Product In EMIS

Access The EMAS Manager

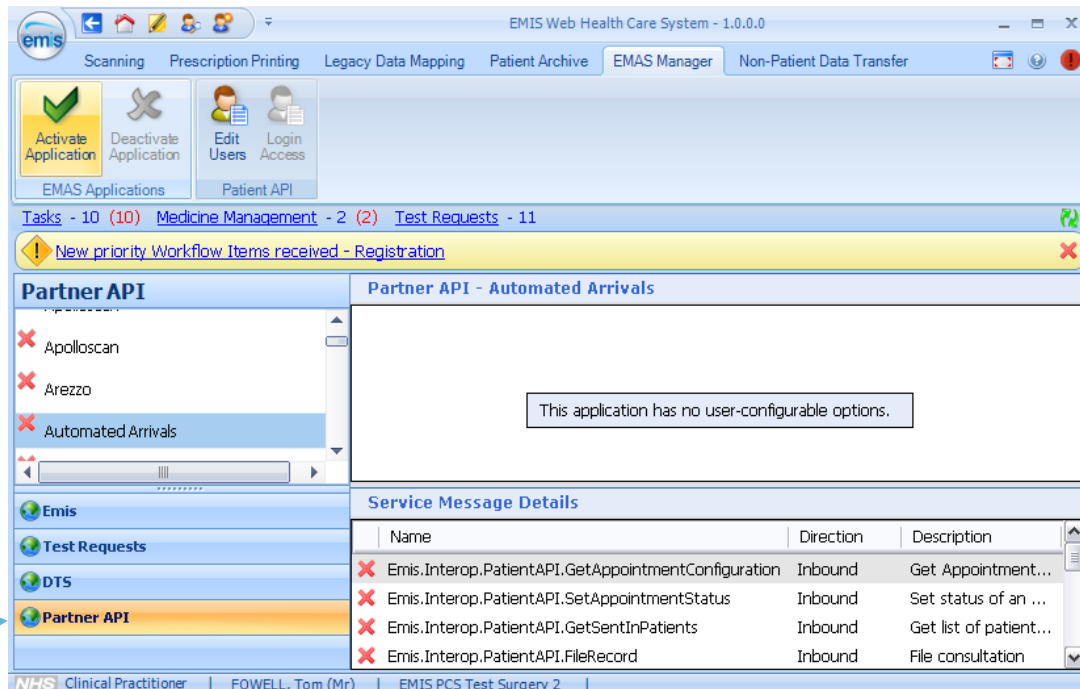
First get access to EMIS Web with an **administrator** account. Then in the top right of the EMIS Web window click the “**EMIS**” button then go “**System Tools**”->“**EMAS Manager**”



Then you will see the following screen



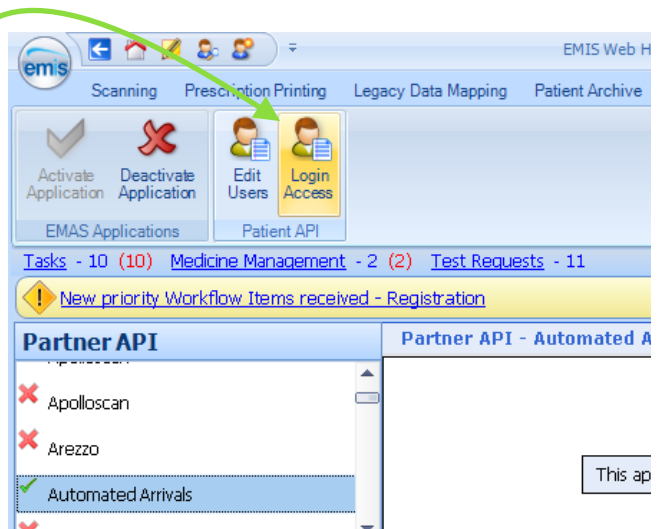
Activating The babblevoice Product In EMAS Manager



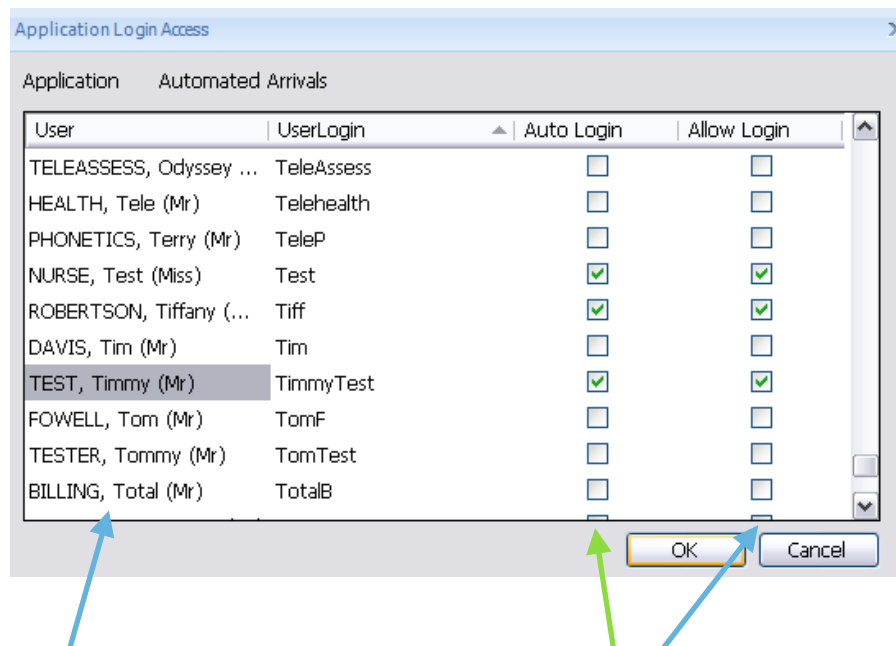
1. Select **“Partner API”** from list on the right
2. Select **“babble”** from the list of Partner API’s which appear above
3. Click **“Activate Application”**

Allowing User Access To The Product

With the babble product selected in the Partner API section. Click **“Login Access”** from the ribbon menu at the top



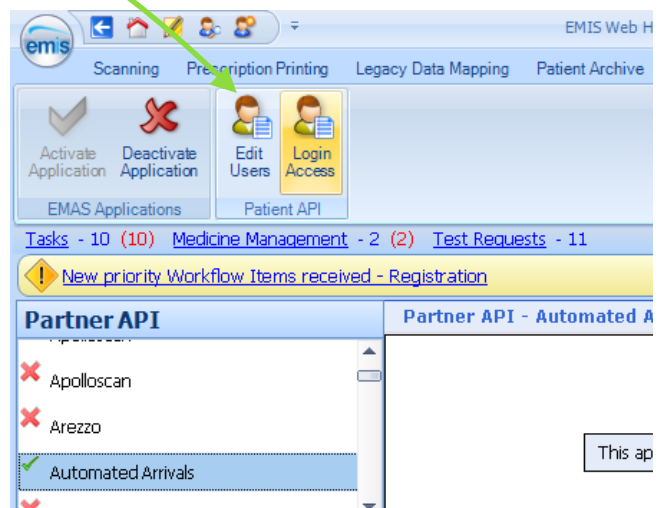
You will then see this window



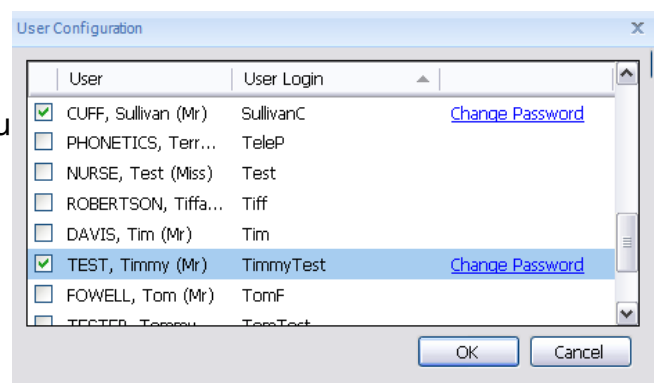
For each active user in EMIS Web you will need to tick both boxes for their login access, **“Auto Login”** and **“Allow Login”**

Edit Users

With the babble product selected in the Partner API section. Click **“Edit Users”** from the ribbon menu at the top



You will then see this window, for all users you wish to access EMIS through ensure the box next to them is ticked.



babblevoice Desktop

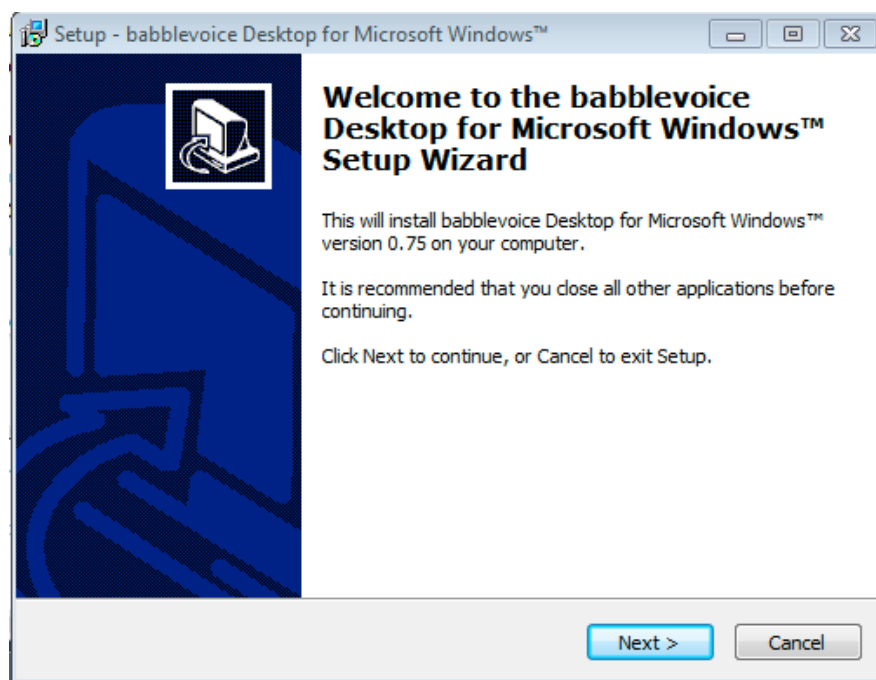
emis

Is emis installed on the PC? - if not speak to emis or install emis software

babblevoice Desktop Installer

The first step of installing the babblevoice Desktop for Microsoft Windows™ is to obtain the installation file, download it from the babblevoice wiki - www.babblevoice.com/wiki/bv_emis_step_by_step_install

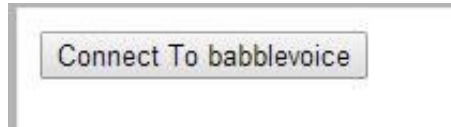
Run the Installer



Follow the instructions, until the installation is complete

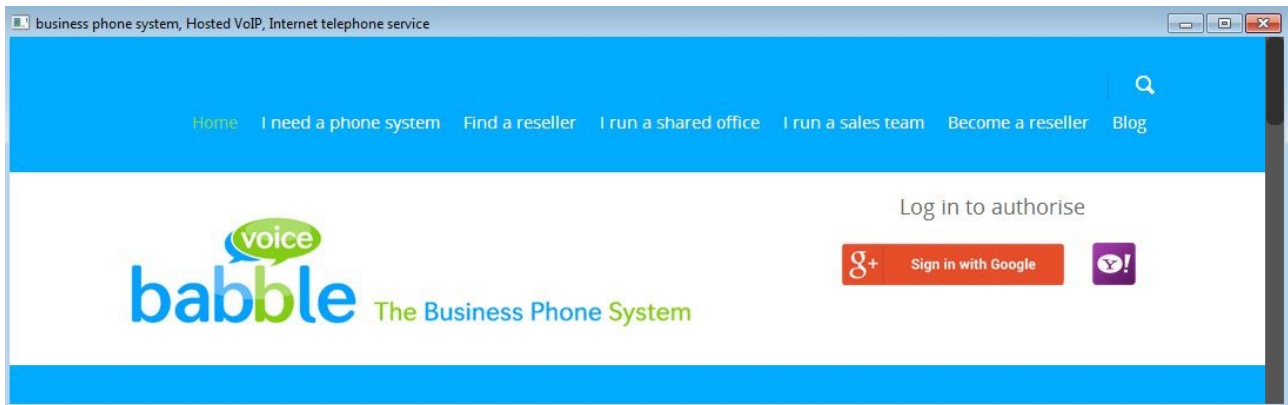
Authorise the babblevoice Desktop

Once the babblevoice Desktop for Microsoft Windows™ has been installed, you will see this screen

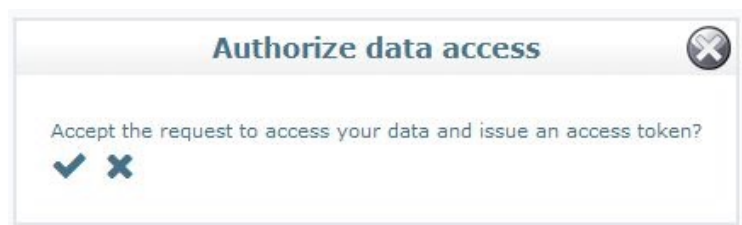


Click **Connect To babblevoice**

Log into your babblevoice account in the pop up window



Then **confirm access**



- NB, You already need to be a user and have been granted access to the babblevoice web console.

Configure babblevoice Desktop

When you have authorised the babblevoice Desktop you will see the configuration page

Main User Account : Jay Baldwin

Watch Devices :

- Nick Knight
- Nick Knight (m)
- Antoine Lever
- Test
- Liz Bateman
- Sales
- James Palmer
- Craig Evans

Click to dial : ☒ Context menu : ☒ ?

Hover to click to dial : ☒

Done

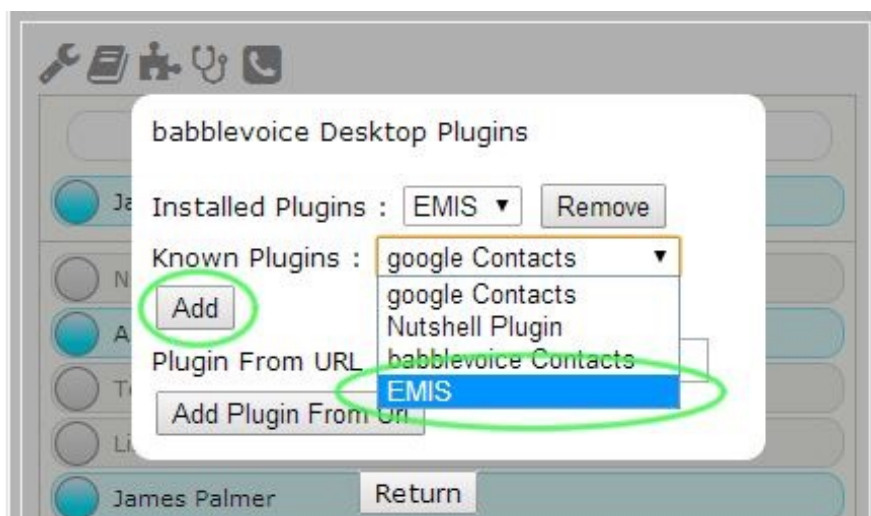
Main User Account - This is your phone, all of the interaction from the babblevoice Desktop to manage calls will use this device in babblevoice.

Watch Devices - Select any phones in here to watch their status and interact with them.

Adding the emis plugin

Click the plugins icon on babblevoice desktop for windows : 

In the known Plugins drop down select emis, click add, and you will be prompted for your emis organisational ID



babblevoice emis IVR

emis User Account

We recommend having a dedicated machine, which is running it's own user account for EMIS and can run 24/7

For instructions on how to set up this user account see www.babblevoice.com/wiki/emis_set_up

Enable the IVR

In the babblevoice Desktop hover on stethoscope, then click on the cogs icon.



Tick **enable IVR**



IVR Credentials

In the section that appears, the section titled credentials requires your emis API IVR username and password - these are emis credentials which are set the first time an application which integrates with emis is ran against that user

Credentials	
Username	<input type="text"/>
Password	<input type="password"/>

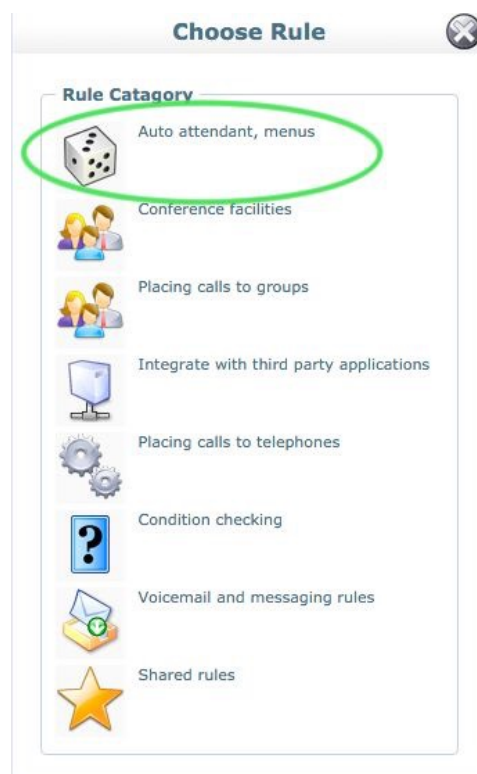
Agent URL

Copy **ALL** of the contents from the box labeled **Agent URL**

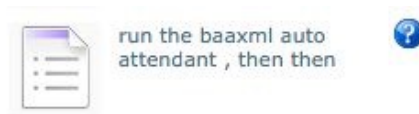
Agent URL

Switch to the babblevoice web console (www.babblevoice.com)

At the point in the rule you wish to the run the emis IVR select the first section of rules
Auto attendant, menus



Then select **run the baaxml auto attendant , then then**



Next you will see the following screen, paste the agent URL from the babblevoice desktop into the URL text field

Rule

When an incoming call comes in on ***** then run the baaxml auto attendant , then ,

Url

After this you probably want the rule to call a group for reception

Appointment Range

In the configure section for the emis plugin. You can configure the time period of appointments to offer patients who call the IVR



The start of the timeline represents the point the patient calls the IVR and the slider represents the time frame the IVR will select appointments from

Slot Types

You can narrow down appointments to over in the IVR system by deselecting appointment types from the configure screen

Slot Types To Offer

Provisionally Booked : ☒

Comment : ☒

Default : ☒

Assurity : ☒

MikeA : ☒

Telephone : ☒

General : ☒

Arrivals : ☒

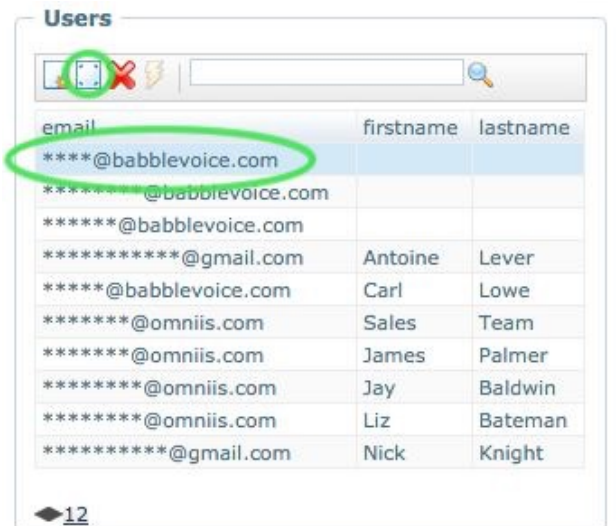
Home Visit : ☒

era-Pending : ☒

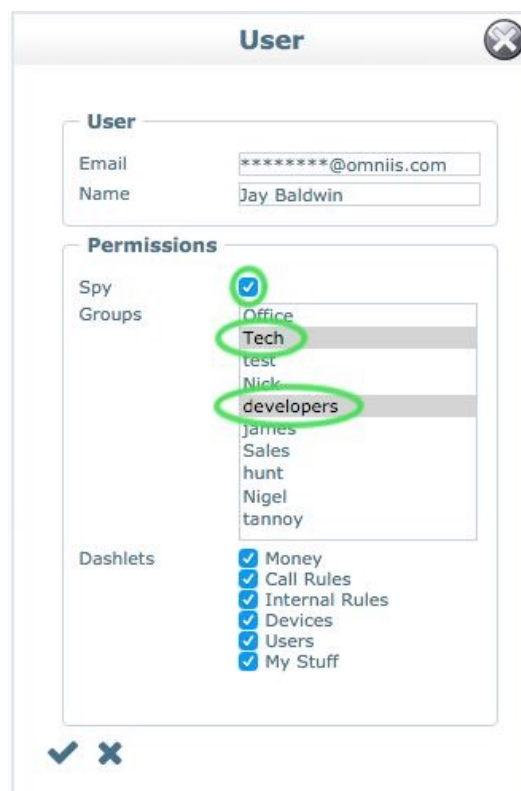
Permissions

Edit User

To Change permissions for users (this is connected to the account that was used to login to the babblevoice Desktop initially) go to the babblevoice website, log in and in the users widget select the user you would like to grant or restrict access to and click edit



Then you will see the following screen. To allow a user to spy make sure the tick box is ticked, then you can select the groups you wish the user to be able to spy on to prevent a user from changing permissions un-tick the box next to Users in the dashlet section at the bottom. This will prevent the user from accessing the user widget altogether.



Version 1